



High Meadow Newsletter

Newsletter #14
Week of 4/18/07

PO BOX 552, STONE RIDGE, NY 12484 PHONE 845.687.4855 FAX 845.687.5151 EMAIL CONTACT@HIGHMEADOWSCHOOL.ORG

High Meadow School Calendar

April 22nd
10:30-12:30
Skatetime 209
Fundraiser for
Autism and the
Open Center

April 29th
HMS Concert
series w/ Liz
Mitchell and Dog
on Fleas RE-
SCHEDULED!

April 30th Bus-
sing for New Paltz
residents **ONLY!**

May 3rd 2p.m.
Earth Day Nature
Walk at HMS

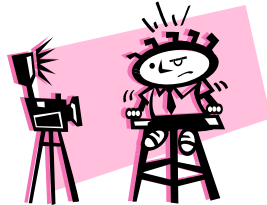
May 24th Inten-
sives drama Per-
formance

May 31st 5th/6th
Trip To Phil/Pa

**May 30th—June
1st** 7th/8th Grade
trip to D.C.

June 3rd Ride
the Ridge Chal-
lenge

The last musical adventure in our **Concert Series** will be held Sunday, April 29th, having been rescheduled due to rain and more rain. Please join us for this wonderful fun-for-the-whole-family event that features **Elizabeth Mitchell and Family** and the zany and lovable **Dog on Fleas**. Please join us!



Say Cheese!

Today was **Picture Day** and all of your children worked with the camera and photographer magically. Photographs were taken of every student in every class so if you have not yet ordered any prints but would like to, you will be given a second chance to order after reviewing the proofs. Contact Alicia in the office if interested!



Join us for High Meadow School's First Annual RIDE THE RIDGE BIKE CHALLENGE



Skate to Help Others!

Our Alum Sarah Borris, along with Valerie Paradiz and in conjunction with the Open Center for Autism is organizing a fundraiser this Sunday, April 22nd from 10:30-12:30. All proceeds will benefit the Center which offers much needed after-school and summer programs, and a specially tailored Wayfinder Experience to children on the Autism spectrum.

Admission is \$15/person; \$25./family (price includes skate rental). So come and skate, while bringing funds to a program and community center that benefits many families and yet is presently very underfunded. "We're in immediate crisis," Sarah has said, who says the Center needs \$18,000 immediately for operating costs.

For more information, call Sarah Borris at 800-661-1575, ext. 2.

Summer aftercare

will take place at the school June 14-22. This is a 9a.m.-5p.m. child care program. We set up a sprinkler, provide a craft, and let the children play!



You can sign up for the entire time or any part of the Summer Aftercare program that works for you. To get a price list (same as last year) and sign up form, see Kathy (Pre-k), Hope (office), or one of the after-care people. If you have questions you can call Kathy 255-0730. Thanks!

On Sunday, June 3 we have a fun and rewarding way for the High Meadow community to team together to participate in the High Meadow inaugural bike challenge "**Ride The Ridge.**" Created to raise funds to help the **Marbletown First Aid Unit (EMS)** and High Meadow's new **Performing Arts Center**, the challenge consists of three routes – a five-mile ride, 25 mile ride, and a 50 mile ride. All courses go through Ulster County, beginning and ending at High Meadow located on Rt. 209 in Stone Ridge.

The **five-mile family ride** extends throughout the beautiful rural countryside before returning to High Meadow Performing Arts Center. The **25-mile** will extend through High Falls, Rosendale, New Paltz, and then head back to Stone Ridge. The **50 mile ride** continues along the Swangunk Mountain of New Paltz and Gardiner.

Participating bikers pay a **registration fee** of \$15.00 prior to May 1, or a \$20 registration fee thereafter payable to High Meadow School. Riders are asked to get **family and friends to sponsor them** totalling \$100 (ex. five \$20 sponsors) and we encourage participation at any sponsorship available. (**Info. con't next page...**)